



DELIVERING LEADING INNOVATIONS

A hand in a blue lab coat sleeve points at a central hexagon labeled 'INNOVATION'. This hexagon is part of a larger network of interconnected hexagons, each containing a word related to the innovation process. The background is a blurred image of a hand pointing at a screen.

INNOVATION

Research

Improvement

Concept



info@shj.co.uk



01494 782168



www.shj.co.uk



**OUR
MISSION**

COMPANY PROFILE

Founded in 1967, SHJ is a leading supplier of medical gas systems, solutions and services and a market leader in remote monitoring and energy saving technologies.

We have worked with NHS Hospital Trusts and the private sector across the UK for over 50 years, designing, installing and maintaining a wide range of medical gas systems.

We invest heavily in R&D to remain at the forefront of our industry. Our in-house R&D team continually develops new systems for remote monitoring, reducing risk, shortening response times and providing essential management data.

Our core business is providing an all-inclusive planning, design and installation service, using our own directly employed fully qualified engineers.

We pride ourselves on building strong, long-term relationships with our customers.

Working openly and honestly together, we plan, deliver and maintain tailor made solutions to match customer's precise needs.

OUR MISSION

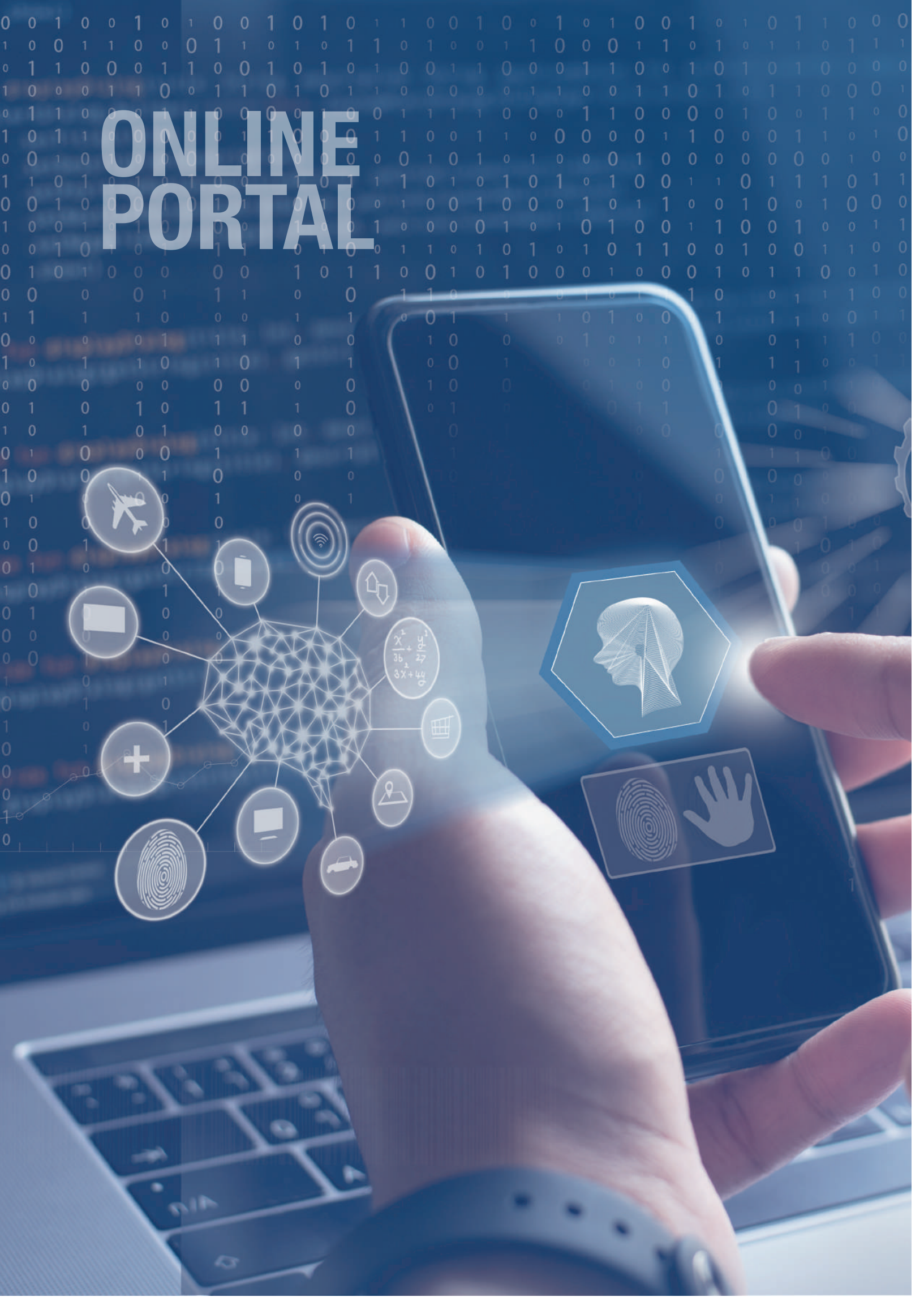
Our mission is to consistently deliver the highest standards of care and support for our customers.

We put our customer's needs first, offering:

- 24/7 – 365-day support
- A 24-hour emergency call out number
- Rapid response times
- Highly qualified engineers
- A dedicated Account Manager
- Real time monitoring
- Complete management solutions



ONLINE PORTAL



ONLINE PORTAL

We offer a bespoke online portal, providing our customers with fully comprehensive cloud based encrypted information, available 24/7 from any browser anywhere in the world.

Our portal provides the following information:

- Real time plant and alarm monitoring
- Comprehensive details of past Planned Preventative Maintenance (PPM) visits
- Faults logged during past service calls and due dates of future services
- Details on previous call outs
- Asset register
- KPI compliance data



NATIONWIDE COVERAGE

Our three offices allow us to provide nationwide coverage and our team of highly experienced engineers, who are located across the UK, provide fast response times for our customers, no matter where they are situated.

QUALITY ASSURANCE

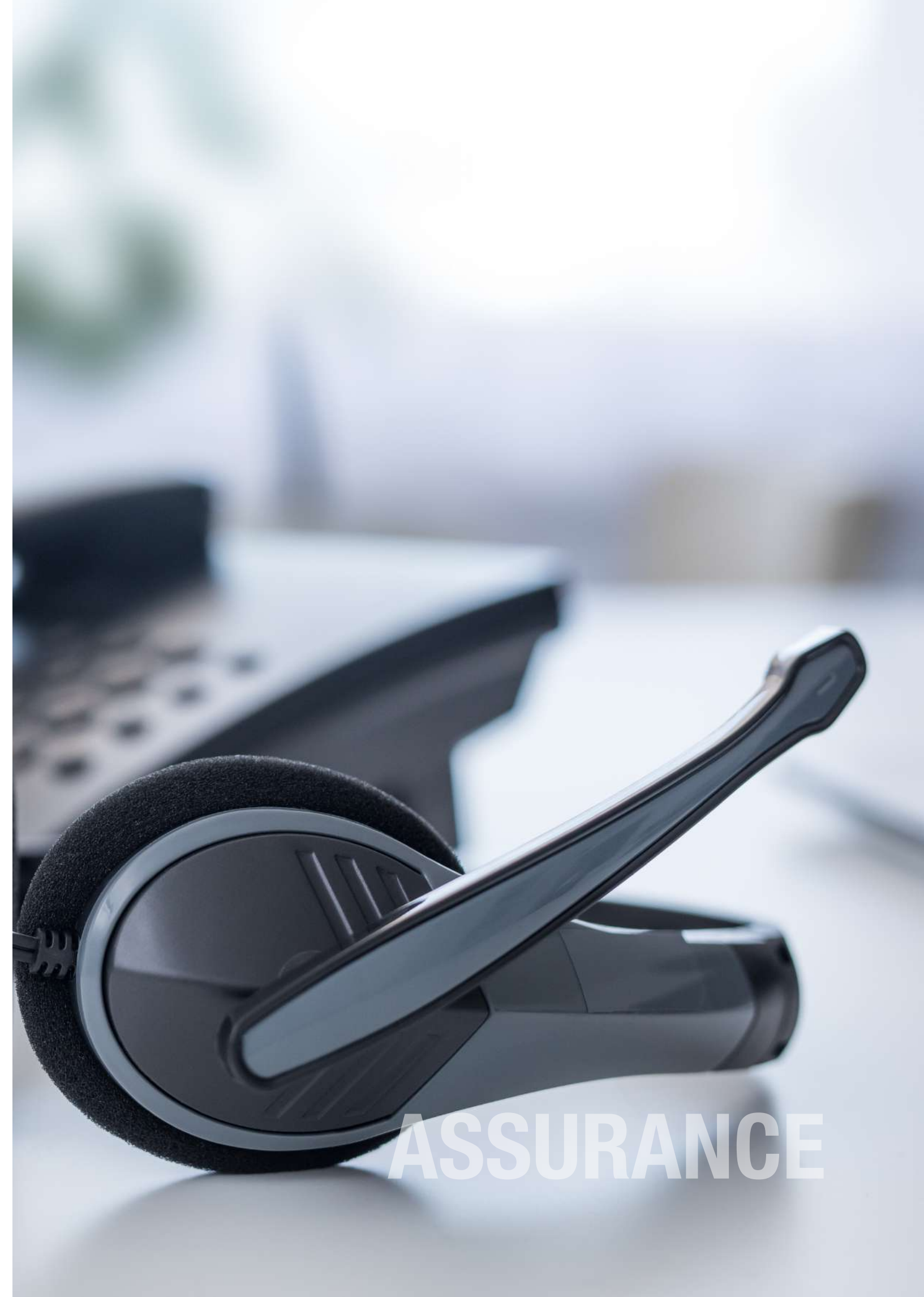
Our reputation is built on the quality of our work, service levels and long-term relationships.

Many of our customers have worked with us for over five decades. Their partnering with us is testament to the efforts that we make to ensure their continued satisfaction.

We provide only the finest quality equipment, materials and workmanship and aim to meet and exceed all required standards.



QUALITY



ASSURANCE

SERVICE

Our service fits within three core product categories.

INSTALLATION

Our installation service includes pipe work for new and upgrade projects, medical vacuum plant, medical air plant, manifolds, medical alarm systems and AGSS.

We plan each installation carefully with our customers, ensuring that our work causes minimum disturbance to hospital routines and is coordinated with the work of other contractors.

Our installations are fully tested at each stage and upon completion are certified in accordance with the requirements of HTM 02-01.

Our installations are also fully warranted, and all our SHJ branded equipment is covered by our 5 year 'no quibble' warranty. This means that in the unlikely event our equipment has a fault we will rectify the fault immediately and at no labour or material costs to our customers.

MAINTENANCE

We offer a range of maintenance services including fully inclusive, planned preventative and reactive options.

We provide a comprehensive breakdown, maintenance, repair and hire service for all medical gas plant and manifold systems, as well as all related alarm systems and intelligent plant controls.

Our service covers routine care and PPM inspections, through to a complete strip-down, re-build, commission and testing service.

CONSULTANCY

Consultancy and technical advice are an intrinsic part of our business, which we achieve as follows:

1. When you need technical advice, you can talk directly to knowledgeable and experienced staff.
2. If you have wider strategic issues, we offer a carefully structured response.

INSTALLATION

- Medical Gas & Laboratory Gas Installation
- Medical Gas Plant Installation
- Medical Gas Alarm Installation
- Gas Detection Systems

MAINTENANCE

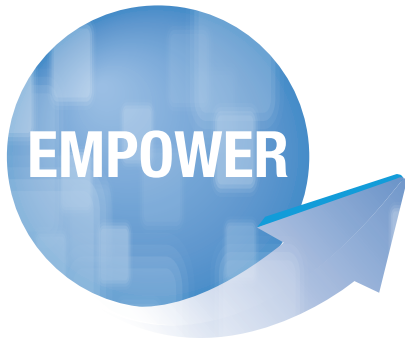
- Planned Preventative Maintenance (PPM)
- Plant Servicing
- Plant Hire

CONSULTANCY

- Site Survey and Design
- Consultancy Services
- Authorised Persons (MGPS)
- Project Management
- Medical Gas Training
- Testing and Installation
- Quality Control Pharmaceutical Testing

INNOVATIONS

Our innovations Empower, Evolution, Enforce and Emanate have been designed to make life easier for those responsible for medical gases in hospitals.



Empower is our intelligent plant control system providing fully automated plant control, ensuring gas supply plants are safe, reliable and working at maximum efficiency.



Evolution is our 24/7 intelligent monitoring system that provides real-time information about a gas supply system, guiding the user straight to any fault and reducing response time, manipulating the process and system components in an easy intuitive manner.

Evolution is available over cloud services and can be streamed to remote devices.



Enforce is our new innovative intelligent plant control system. Enforce will provide real-time diagnostics, alerts and fault logging straight to a PC and over the cloud, ensuring the gas supply system is providing maximum efficiency, accuracy and economic benefits.

Enforce is comprehensive, fully automated, easy to use and will allow for plant control from anywhere with internet access from hand held devices.

Enforce will run energy-saving machine learning algorithms across its plant control to provide quiet, clean, cool and energy-efficient running with no loss to performance, which reduces energy costs and carbon footprint.



Emanate captures the data needed for its AI driven system to make fast, reliable decisions autonomously through Enforce and Evolution, to maintain optimal plant operation and mitigate faults more efficiently at lower costs. This will all be achieved with minimal human intervention and will allow for rapid pre-emptive response to any imminent plant faults or failures with the implementation of best predictive maintenance planning and scheduling practices.



ACCREDITATIONS

Our standards comply fully with the requirements of the Health Technical Memorandum 02-01: Medical Gas Pipeline Systems and we are a Company Affiliate Member with The Institute of Healthcare Engineering and Estate Management (IHEEM).

We hold SafeContractor and CHAS accreditation and are Constructionline Silver Members.

We also hold BSI Certificate No: FM10617 and operate a quality management system, which complies with the requirements of ISO 9001:2015.

We also have Cyber Essentials Certification.

Our engineers also undergo continuous in-house product training, verified by our Reset membership.





DELIVERING LEADING INNOVATIONS

Contact Details

Unit 4, Anglo Business Park,
Asheridge Road, Chesham,
Buckinghamshire, HP5 2QA
United Kingdom

Website: <http://www.shj.co.uk>
Email: info@shj.co.uk
Telephone: 01494 782168
Fax: 01494 784478